

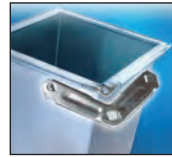
## DUAL HEAD CORNERMATIC® CLASSIC

Cornermatic® automatically inserts and crimps specially designed TDC®/TDF® style corners in seconds. Lets you do a duct section, eight corners, in about 60 seconds with virtually no physical exertion. Compared to other methods of hand insertion and crimping, it's a saving of 3 to 6 minutes per section of ductwork depending on size and gauge.

- Corners are inserted square and fully crimped.
- No need to change the crimping adjustment when inserting corners in 18 to 26 gauge ducts.
- Each quick loading magazine holds up to 175 corners.
- Corners are shipped presorted and oriented for direct loading into the magazine.
- No need for hand sorting.
- Push the ductwork or fitting into the flange guides and the machine automatically does the rest.
- Rotate duct to each corner, then flip and repeat until all 8 corners are crimped.
- Handles 5' nominal duct



Model Details



Scan this QR Code to use the Cornermatic ROI Calculator

## ADJUSTABLE DUAL HEAD CORNERMATIC® CLASSIC

Adjustable Dual Head Cornermatic® Classic adds the feature of automatically adjusting the upper crimping head to handle duct from 48" to 72" in length.

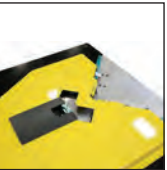
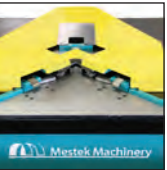
## CORNERMATIC PLUS®

The CORNERMATIC PLUS® was specifically designed to address the difficulty with inserting corners into some styles of fitting ductwork. It joins other world-wide successful Cornermatics such as the Dual-Head and the Corner Cadet® in reducing shop labor. Three years in development brings to the trade a machine that can handle any TDC®/TDF® fitting assembled on a bench. The CORNERMATIC PLUS® automatically and effortlessly inserts and crimps TDC®/TDF® corners in seconds. Lets you do a duct section (eight corners) in about 20 seconds in any gauge, 16 through 26. Generally, tests have shown 80 ducts/hour vs. 15 ducts/hour for manual insertion.

- Specifically designed for the fabrication of duct fittings - even your toughest inside or outside angle offset transition fitting from 16-26 gauge.
- Fully automated - no switches or foot pedals - just push in, Cornermatic Plus® does the rest.
- Completes (8) corner inserts in seconds.
- New quick loading StrapPak™ packaging technology speeds loading and eliminates the need to sort and orient the corners before installation.
- Corners feed from below the work-surface allowing a clean, unobstructed work area.
- Handles tight square throat elbows and flex connectors.
- Works with SMACNA-conforming, T-25a and T-25b flange and many other flanged duct systems, without changing settings.
- Ask about optional table or 'in-floor' mounted unit.
- Bring your fitting productivity up to duct section standards!



Model Details



Strap-Pak™ US Patent No. 9,377,213 B2; 9,545,695 B2

MODEL	CAPACITY	DEPTH OF POCKET	OTHER	SPEED	MOTOR/VOLTAGE	DIMENSIONS/WEIGHT
DUAL HEAD CORNERMATIC® CLASSIC & ADJUSTABLE DUAL HEAD CORNERMATIC® CLASSIC	18 to 26 (.050" to .022" / 1.3mm to 0.6mm) Mild Steel Only	Flange Type for insertion: TDC®/TDF® (Customer to Specify)	Model Capacity - Depends on strapped or boxed type corners used 16 gauge capacity available.	Approximately 2 ½ seconds per corner	Electrical - 110/1/60 (Single Phase) Air - 85 to 100 PSI (5.5 - 7 Bar)	Model CM3-DH: 24-1/8" x 24-1/8" x 116" Weight - 1,400 lbs.  Model CM3-DHA - 35-3/4" x 35-3/4" x 127" Weight - 1,800 lbs.
CORNERMATIC PLUS®	16 to 26 (.0062" to .022" / 1.6mm to 0.6mm) Mild Steel Only	Flange Type for insertion: TDC®/TDF® (Customer to Specify)	Model Capacity - Max 80 Corners StrapPak™ Quick-loading sleeve loads in 10 seconds	Approximately 2 ½ seconds per corner	Electrical - 110/1/60 (Single Phase) Air - 85 to 100 PSI (5.5 - 7 Bar)	Model CM-P Length - 32" Width - 36" Height - 34" Weight - 600 lbs.